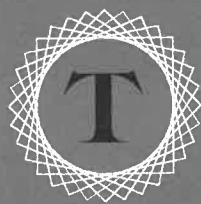


— DAWN WHITELAW | DISCOUNTING | DIANA REUTER-TWINING | FLOWER POWER | XU BEIHONG —

# FINE ART CONNOISSEUR

AUGUST 2021

 **STREAMLINE**  
ARTS & CULTURE

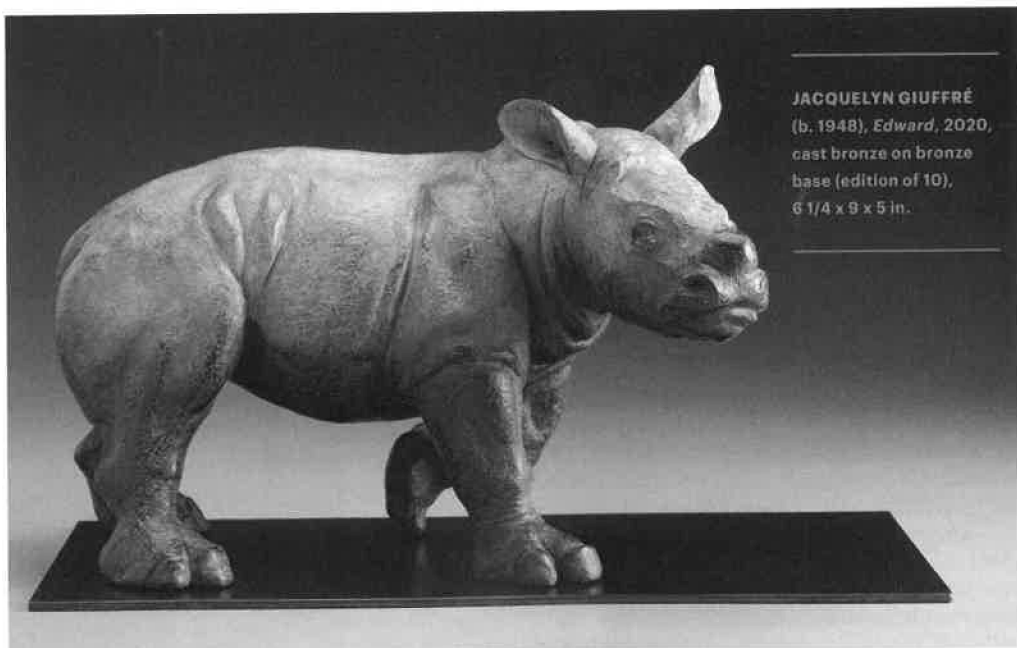
TODAY'S  
MASTERS

# THE NATIONAL SCULPTURE SOCIETY EXCELS YET AGAIN

It's summertime, which means that more Americans are spending time outdoors. Chances are the art lovers among us are stopping to admire the sculptures that adorn our parks, plazas, and other public spaces. Many of them were created by members of the National Sculpture Society, which was founded in New York City in 1893 by a group of America's most prominent sculptors and architects, including Daniel Chester French, Richard Morris Hunt, Augustus St. Gaudens, Stanford White, and John Quincy Adams Ward, in order to "spread the knowledge of good sculpture."

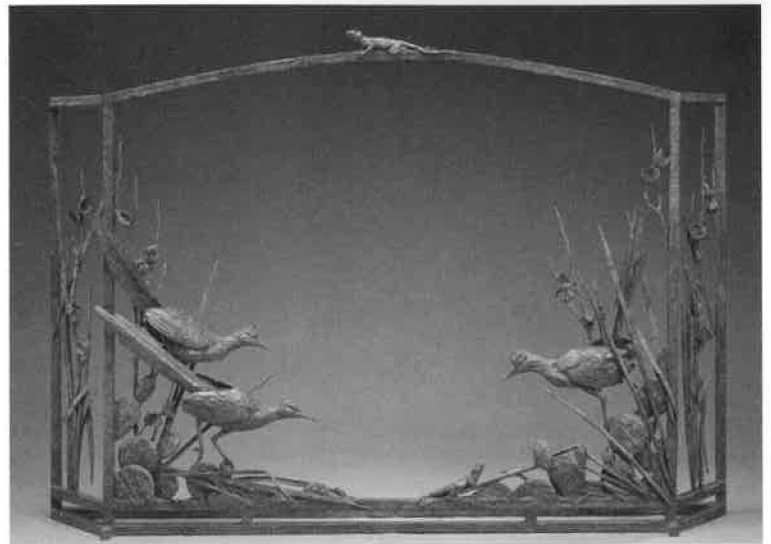
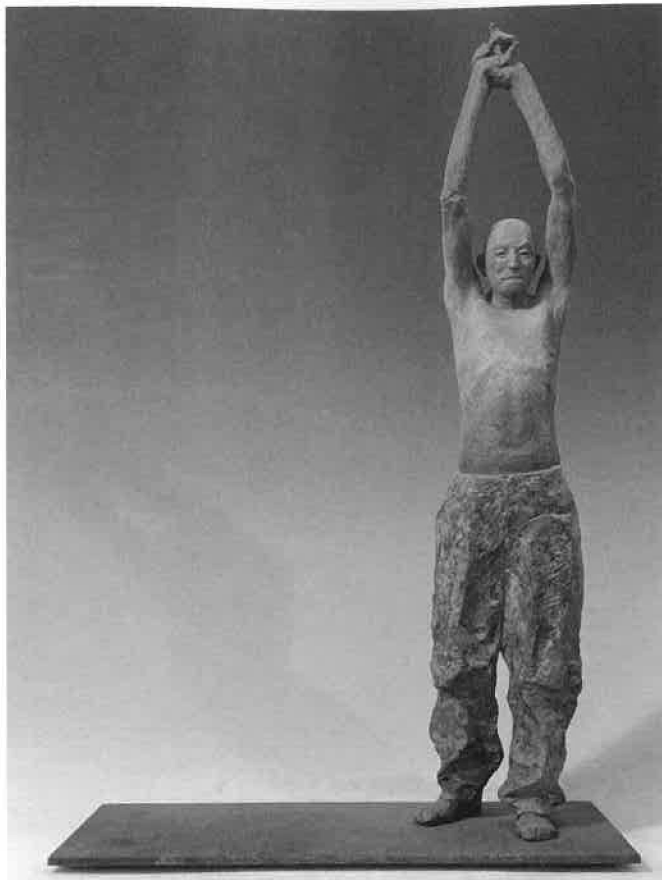
Today, NSS members are classified as Fellows (currently 105 in number), Sculptor Members (117), or Associates (750). There is also a large group of Supporting Members who encompass Patrons, Sponsors, and Allied Professionals. When there's not a pandemic raging, these members convene annually for a convivial Sculpture Celebration Weekend held in different parts of the country.

Surely the NSS activity most familiar to the public is its Annual Awards Exhibition, the 88th edition of which is now on view through August 22 at Brookgreen Gardens, a 90-minute drive north of Charleston, South Carolina. Founded in 1931 by the collector-philanthropist Archer M. Huntington and his talented sculptor wife, Anna Hyatt, Brookgreen holds the most extensive collection of figurative sculpture by American artists in any outdoor setting.



JACQUELYN GIUFFRÉ  
(b. 1948), *Edward*, 2020,  
cast bronze on bronze  
base (edition of 10),  
6 1/4 x 9 x 5 in.

This year's NSS exhibition features the work of 55 artists, selected from 428 images that were submitted by 192 Fellows, Sculptor Members, and Associates. The selection jury comprised NSS Fellow Debbie Engle, sculptor Michael Evert, and Melissa Ralston-Jones, who curates the gallery at Western Connecticut State University. Illustrated here are 10 works that will appear in the show, which will be installed across more than 3,200 square feet within Brookgreen's impressive new Brenda and Dick Rosen Galleries.



(CLOCKWISE) TIMOTHY HOOTON (b. 1961), *Painter*, 2020, cast iron, steel, and milk paint (edition of 5), 23 1/2 x 15 3/4 x 61 1/2 in. ■ SCOTT JOHNSON (b. 1952), *Passchendaele* (detail), 2021, bonded bronze (edition of 3), 35 1/2 x 54 x 36 in. ■ WALTER T. MATIA (b. 1953), *Trouble Ahead, Trouble Behind*, 2019, bronze, 54 x 39 x 7 in. ■ GARY LEE PRICE (b. 1955), *Great Contributors: Harriet Tubman*, 2020, bronze (edition of 40), 19 x 70 x 32 in. ■ OCEANA RAIN STUART (b. 1969), *The Woman from the Mountain*, 2019, cast bronze (edition of 18), 22 x 7 x 6 in.



(ABOVE L-R) EVA-MARIA WOHN (b. 1955), *Redemption Pending*, 2019, bronze (edition of 9), 15 1/2 x 6 x 8 in. ■ BASIL WATSON (b. 1958), *Portrait of Congressman John Lewis*, 2020, bronze (edition of 8), 17 1/2 x 8 x 10 in. ■ SUSAN WAKEEN (b. 1955), *Carla*, 2015, patinated resin (edition of 12), 21 x 13 x 8 1/2 in. ■ (RIGHT) ELLEN TYKESON (b. 1955), *Jump!*, 2018, bronze and fiddleback maple (edition of 37), 21 x 10 x 8 in.

All of the selected works will appear in the accompanying catalogue and most will be available for sale via the administrative staff at Brookgreen. In addition, all will be eligible for the more than \$20,000 in cash awards presented by a separate jury consisting of NSS Sculptor Member Heidi Wastweert, sculptor Angela Cunningham, and Charleston gallery owner Mary Martin. Finally, a People's Choice Award will be announced at the show's closing reception on August 21.

Seventeen of these works will next be shown in the Award Winners Exhibition held at NSS's headquarters in midtown Manhattan from October 4 to December 10. Supervised by executive director Gwen Pier, this headquarters is located at 6 East 39th Street (Suite 903), close to Grand Central Terminal and the main branch of the New York Public Library. In addition to a handsome light-filled gallery, it is home to a library containing rare photographs, documents, articles, and books related to American sculpture.

Readers lucky enough to visit either showing of the 88th Annual Awards Exhibition are surely in for a three-dimensional treat. ●

**Information:** [nationalsculpture.org](http://nationalsculpture.org), [brookgreen.org](http://brookgreen.org). In addition to the 10 works illustrated here, the exhibition includes the magnificent head by Erik Ebeling detailed on the cover of this magazine. For a full captioned photo of it, please see page 12.

**KELLY COMPTON** is a contributing writer to *Fine Art Connoisseur*.

